



FIRST Newsletter

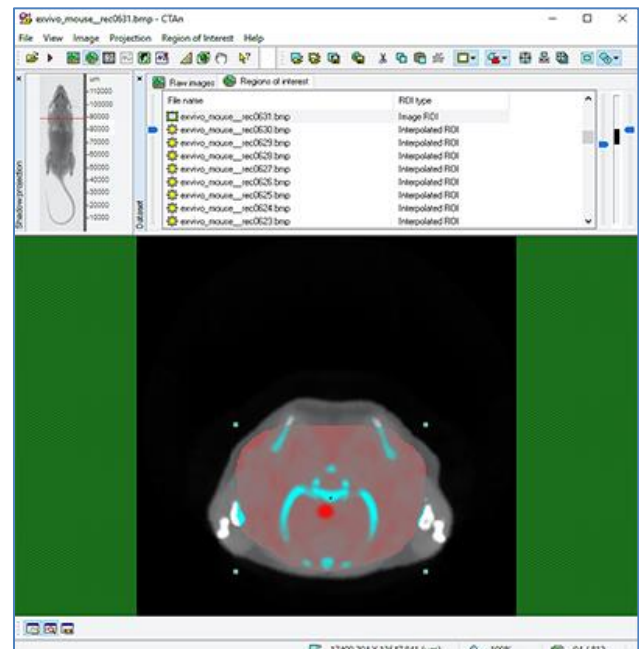
Jun 2020, Issue 53

Micro-CT / XRM – All About Region-of-Interest Selection

A region of interest is a user-defined region within the entire acquired image volume covering the features of interest. This reduces the total image volume and thus saves disk space and allows faster processing of further analysis. The terms “region of interest” (ROI) and “volume of interest” (VOI) are frequently used interchangeably. To be exact, ROI means a selected region on a single cross-section in 2D, while “VOI” means the ROIs on many consecutive slices making a selected volume. But “ROI” is often used to mean a selected volume like VOI – so users should decide for themselves how to use these terms.

CTAn provides a powerful region of interest (ROI) tool which allows users to selectively define areas in which to conduct analysis or processing, even for complex shapes.

[Method note 131 Region of interest](#) contains a worked example of defining an ROI for subsequent segmentation of mouse lungs.



Final ROI of the lungs indicated in red.