



## FIRST Newsletter Jul 2016, Issue 39

### SPECTRA.ELEMENTS – Recalibrate Your Expectations!

By *Matthias Lindhuber, Bruker AXS GmbH, Karlsruhe, Germany*

#### SPECTRA.ELEMENTS – Performance now comes with ease-of-use

The new S2 PUMA comes with the powerful **SPECTRA.ELEMENTS** software suite for complete instrument control. It was developed with the user in mind to make usability and performance the highest priorities. The completely integrated design features full access to all spectrometer functionality through one main window – no more cluttered screens with several floating windows for different functions!

#### Analyze. Everything. Faster.

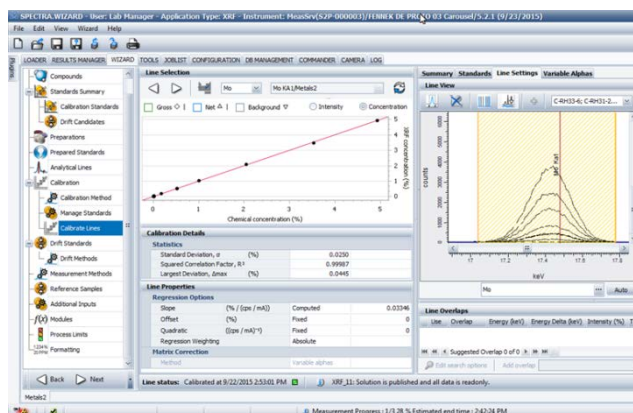
SMART-QUANT FP is the standardless solution for SPECTRA.ELEMENTS which allows the quick analysis of unknown samples. All you have to do to get an analysis with SMART-QUANT FP is to place your sample into the instrument, name it, and click – or tap, in case of the TouchControl™ screen – on “Start” (see Figure 1).

TouchControl allows for an independent routine operation of the spectrometer in Island Mode. Once the instrument is set up, no external separate PC is necessary to conduct measurements. Several user account levels allow for distinguished access to instrument control and data.



*Figure 1: The TouchControl screen ensures independent operation for daily routine analyses.*

For highest precision and accuracy, a standard-based calibration delivers best results. Setting up calibrations can be time-consuming, particularly if the software gets in your way. But not with SPECTRA.ELEMENTS! The proven tree structure in our Wizard calibration editor guides you step by step through the calibration (see Figure 2).



*Figure 2: The calibration window of the Wizard provides you with maximum ease-of-use for your calibration tasks.*

With the Wizard you can get your calibration curve updated on the fly and in real-time within the same window by adjusting peak and background positions. These positions can be modified through different options, e.g. fixed position, integration, etc. (see Figure 3).

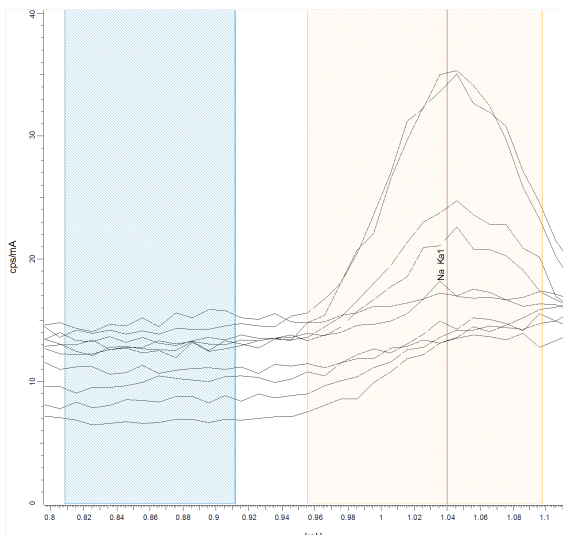


Figure 3: Active peak and background integration for the calibration of Na peaks and background with SPECTRA.ELEMENTS' Wizard.

### The functionality you need – at your fingertips



The powerful Results Manager puts you in full control of your analysis results! It lets you find, format, display, print, and export your data. The report output functionality (see Figure 4) lets you create ready-to-print summaries of your results with ease.



You have long lists of sample queues? No problem, the Joblist functionality helps you to stay in control of your samples at any time. With Joblist you can easily schedule measurement jobs and manage and adjust sample priority and order.



The LiveSpectrum displays the spectrum of the currently measured sample in real-time. Scaling and labeling of the lines in the plot can be modified according to your needs.

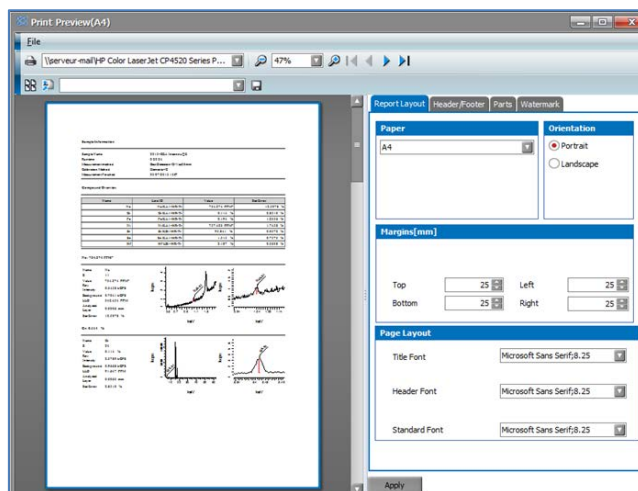


Figure 4: The report output functionality of the Results Manager provides the user with a quick way to print results summaries.

### Your SPECTRA.ELEMENTS advantages:

- High-performing spectrometer software with full functionality bundled in one suite – no floating windows, just one main window
- Tab-based organization of all functions guarantees easy overview and fastest access to all controls and information
- The intuitive surface layout allows operators of all skills and backgrounds to easily and quickly get started
- Advanced calibration editor (Wizard) with real-time update of your calibration parameters – all in one window
- The highly user-friendly TouchControl enables independent routine operation in Island Mode without external PC – save valuable laboratory room!
- Future-proof design ready for extensions and new plug-ins